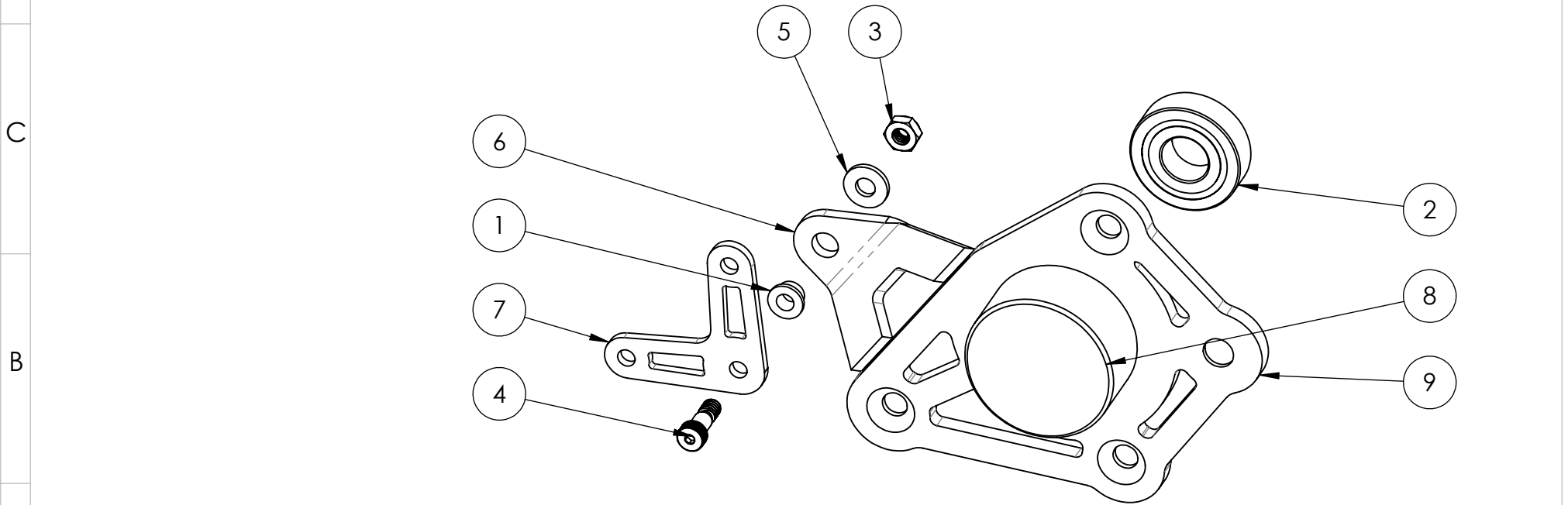



	1	2	3	4	5	6	7	8
	ITEM	PART NUMBER/DESCRIPTION				QTY.		
E	1	6338K411_OIL-EMBEDDED FLANGED SLEEVE BEARING				1		
	2	6661K104_BALL BEARING				1		
	3	90101A230_18-8 Stainless Steel Thin Nylon-Insert Locknut				1		
	4	91273A126_Same-Size Thread 18-8 Stainless Steel Shoulder Screw				1		
	5	96659A106_TYPE 18-8 STAINLESS STEEL SAE FLAT WASHER				1		
	6	SHIFTER ARM BRACKET				1		
	7	SHIFTER ARM LINK				1		
	8	SWINGARM ADAPTER BOSS LEFT				1		
	9	SWINGARM ADAPTER PLT LEFT				1		

- NOTES:
- D 1. PART NUMBERS ARE IN REFERANCE TO MCMASTER CARR



A	TOLERANCES UNLESS OTHERWISE SPECIFIED					THE INFORMATION CONTAINED ON THIS DRAWING IS THE EXCLUSIVE PROPERTY OF ARMORED WORKS, LLC. UNAUTHORIZED REPRODUCTION IS PROHIBITED. <b>DO NOT SCALE DRAWING</b>	 A DIVISION OF ARMORED WORKS, LLC
	DIMENSIONS ARE IN INCHES	DECIMAL	FRACTION	ANGULAR	SURFACE		
	ANGLES ARE 90 DEG UNLESS OTHERWISE SPECIFIED	.XX +/- .010 .XXX +/- .005	+/- 1/16	+/- 1 DEG	32		
	<b>CURRENT REVISION</b>	[A][CAP][08/30/21] PRODUCTION RELEASE					
	<b>PREVIOUS REVISION</b>						
<b>PART NUMBER/DESCRIPTION</b>						SWINGARM ADAPTER ASSY LEFT	